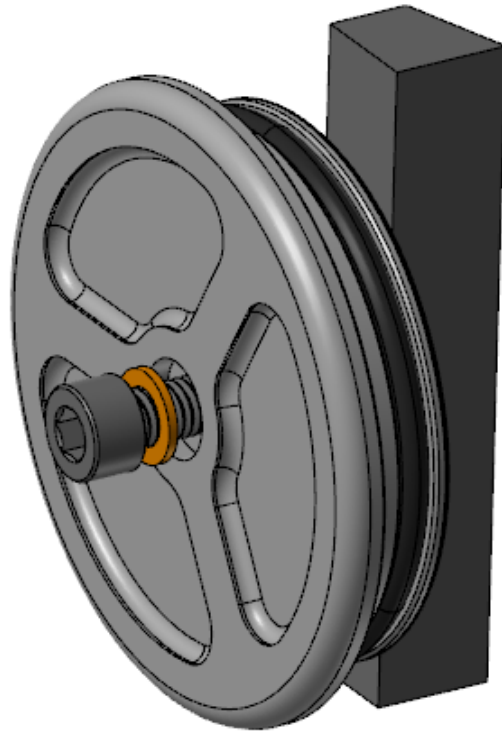




Cummins Side Freeze Plug

P/N 010611-1V2 & 010611-1

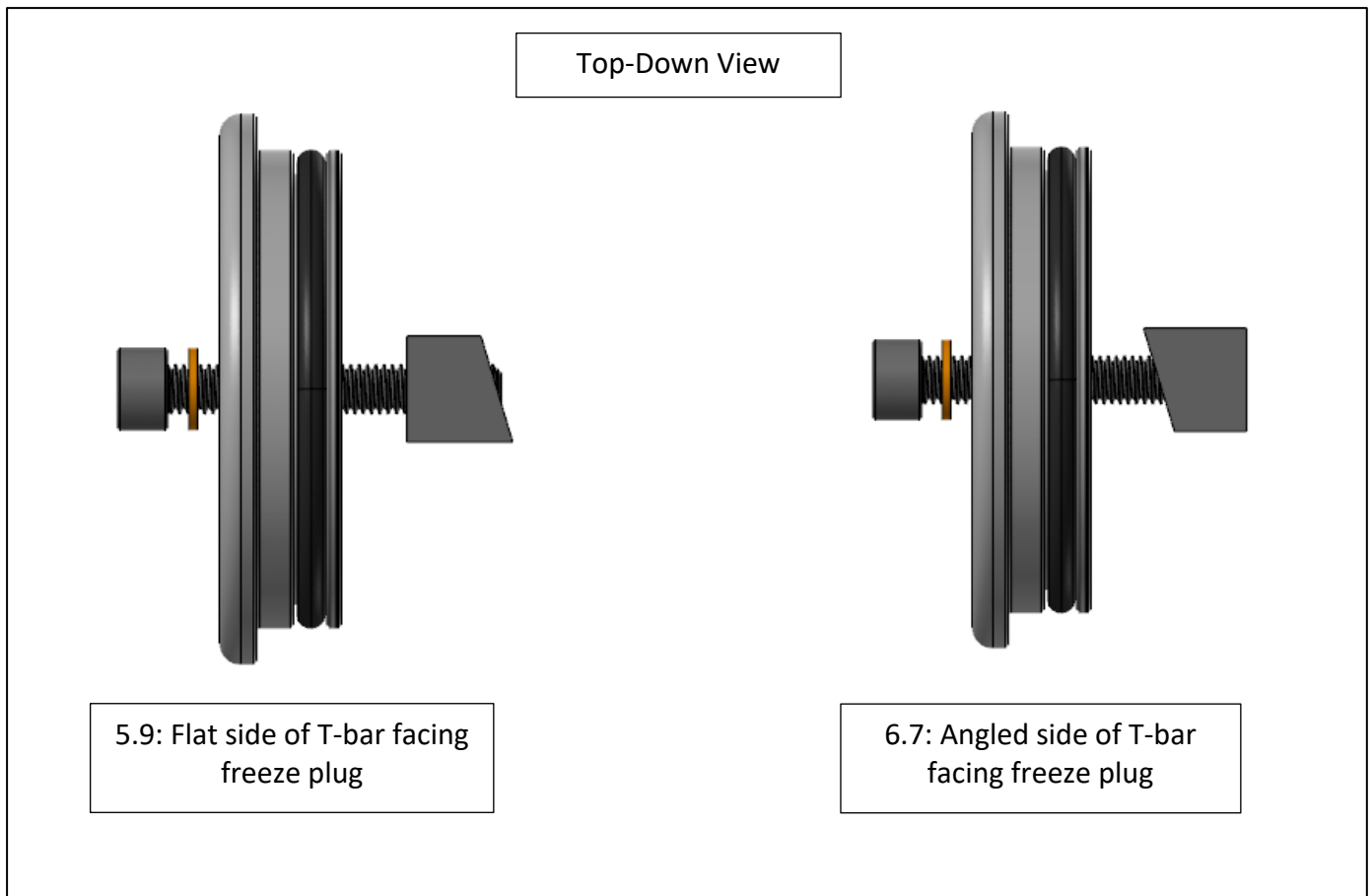


Features:

- Billet machined construction with decorative pocketing
- Threaded T-bar mounting
- O-ring and copper sealing washer to prevent leaks

Installation Instructions

1. Remove factory press-in freeze plug
2. Clean freeze plug bore for a smooth sealing surface
 - a. Make sure there is no pitting on bore
3. Put light coat of grease on freeze plug O-ring
4. Install copper sealing washer onto bolt
5. Put bolt through freeze plug
6. Start bolt into T-bar threads



7. Insert T-bar into engine block

8. Tighten bolt to seat freeze plug into bore

a. Make sure O-ring stays seated in groove

9. Torque bolt to 7 ft-lbs

